

# *Delo z osciloskopom*

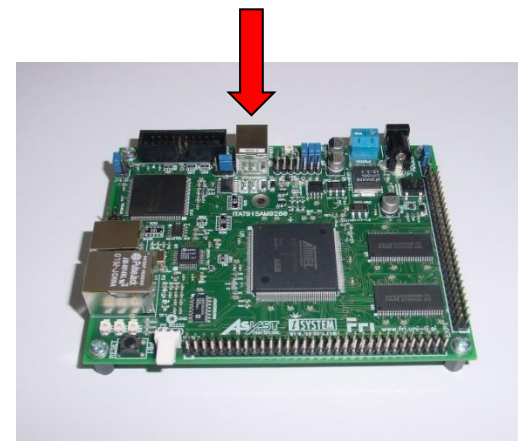
# Delo na FRI-SMS razvojnem sistemu

## Priključitev :

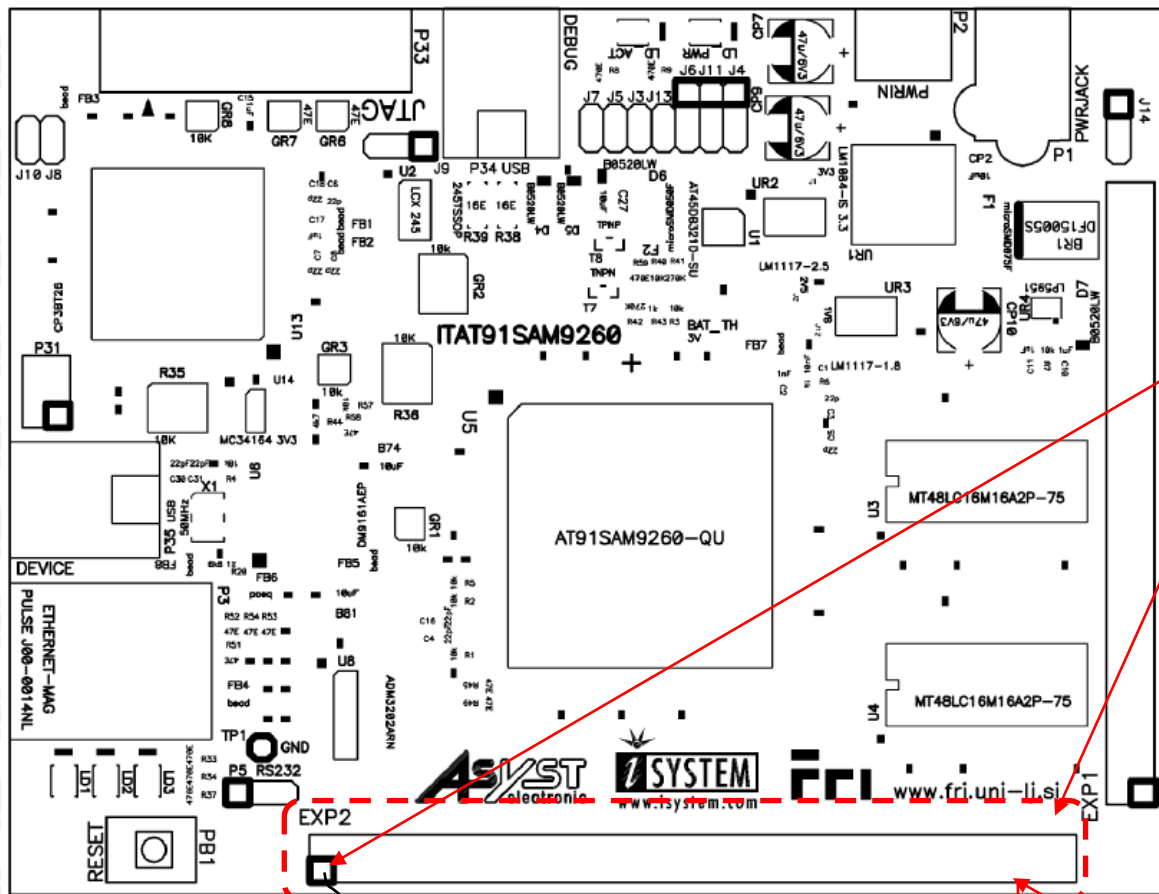
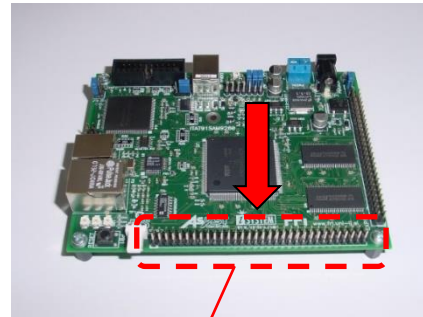
- **USB** prikllop na **daljši stranici**, sveti **zelena LED** dioda

## Poseben projekt za FRI-SMS (e-učilnica) :

- **dodatne nastavitve** (informativno) :
  - frekvenca urinega signala (višja poveča porabo!)
  - vklop predpomnilnikov
  - inicializacija sklada oz. SP – kazalca na sklad
- **dodajanje vsebine (start.s):**
  - podatki/operandi:
    - dodamo v `/*constants*/` ,končamo z `.align`
  - program :
    - dodamo v `/* enter your code here */`
    - na koncu programa je mrtva zanka
    - podprograme dodamo za mrtvo zanko



# Priključki na FRI-SMS razv. sistemu

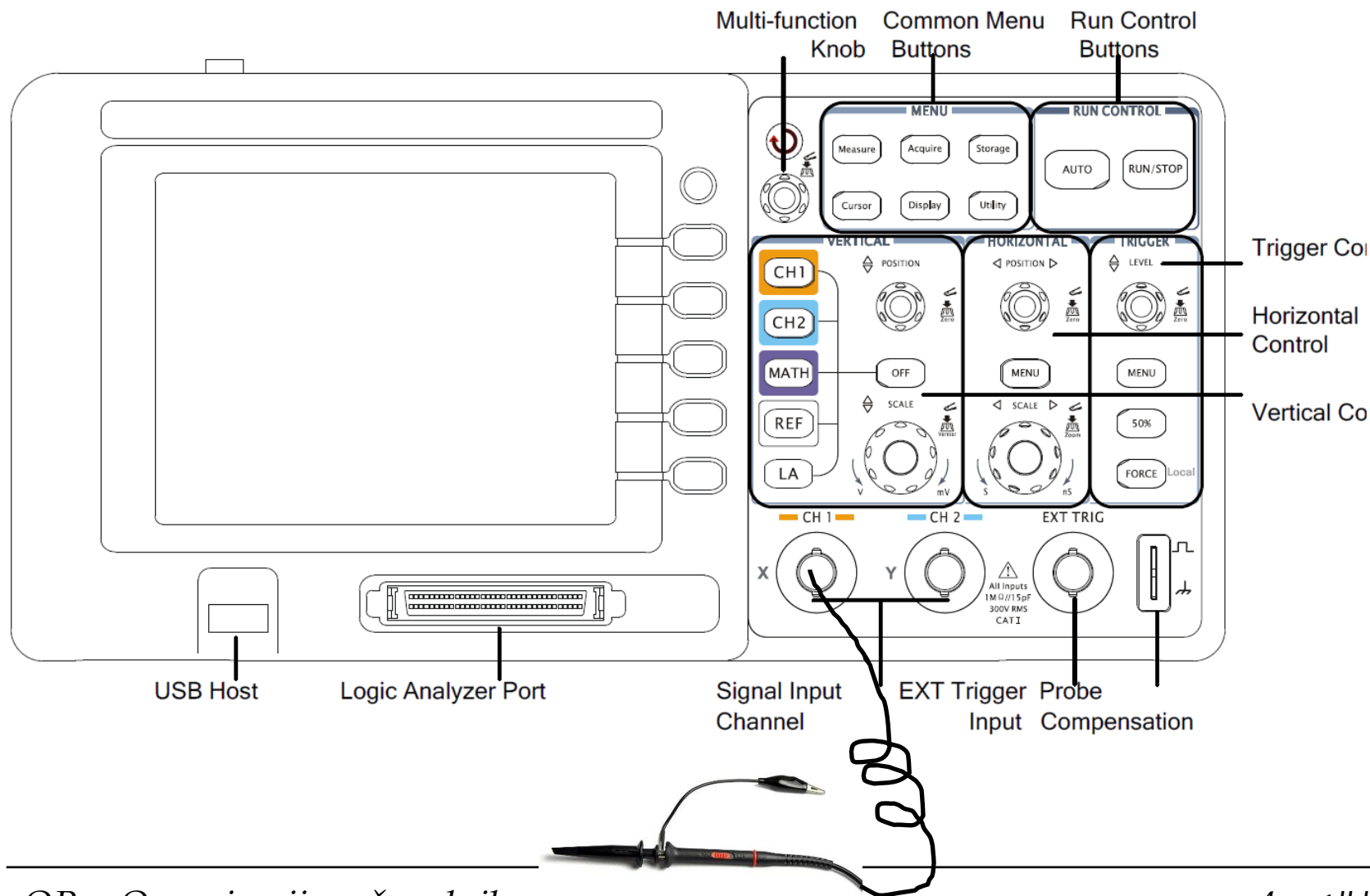


EXP2

GND	1	2	CPU_RESET
GND	3	4	/
PB0	5	6	PB1
PB2	7	8	PB3
PB4	9	10	PB5
PB6	11	12	PB7
PB8	13	14	PB9
PB10	15	16	PB11
RS232_TXD	17	18	RS232_RXD
PB16	19	20	PB17
PB18	21	22	PB19
SHDN	23	24	PC15/NWAIT
PC14	25	26	PC13
PC11	27	28	PC10/A25/CFRNV
PC9	29	30	PC8/CFCE0
PC7/CFCE2	31	32	PC6/CFCE1
PC5	33	34	PC4
PA22	35	36	PA23
PA24	37	38	PA25
PA26	39	40	PA27
PB31	41	42	PB30
PB29	43	44	PB28
PB27	45	46	PB26
PB25	47	48	PB24
PB23	49	50	PB22
PB21	51	52	PB20
CFWE	53	54	CFOE
CFIOR/NBS1	55	56	CFIOW/NBS3
PA28	57	58	PA29
PA4	59	60	PA5
GND	61	62	HDMA
GND	63	64	HDPA



# Prednja stran osciloskopa



# Prednja stran osciloskopa - kontrole

## Y-os (el. napetost)

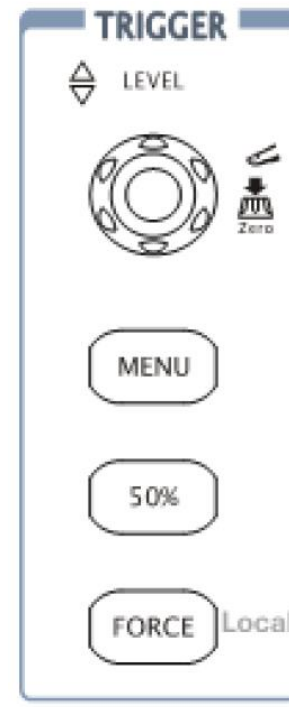
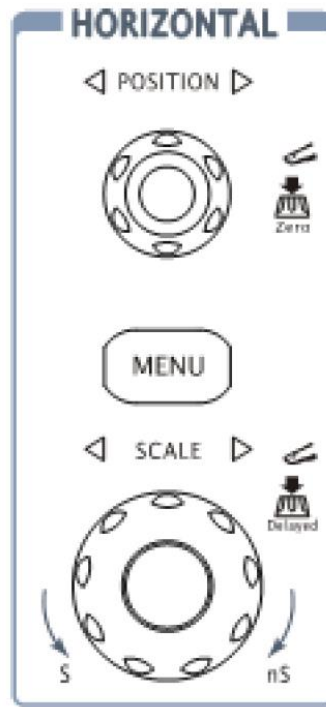
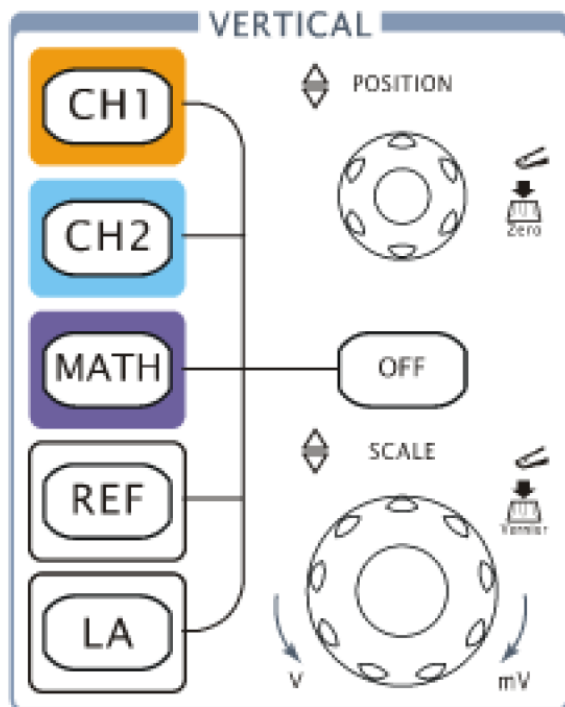
- nastavitve merila [V/razdelek]
- pozicioniranje

## X-os (čas)

- nastavitve merila [s/razdelek]
- pozicioniranje

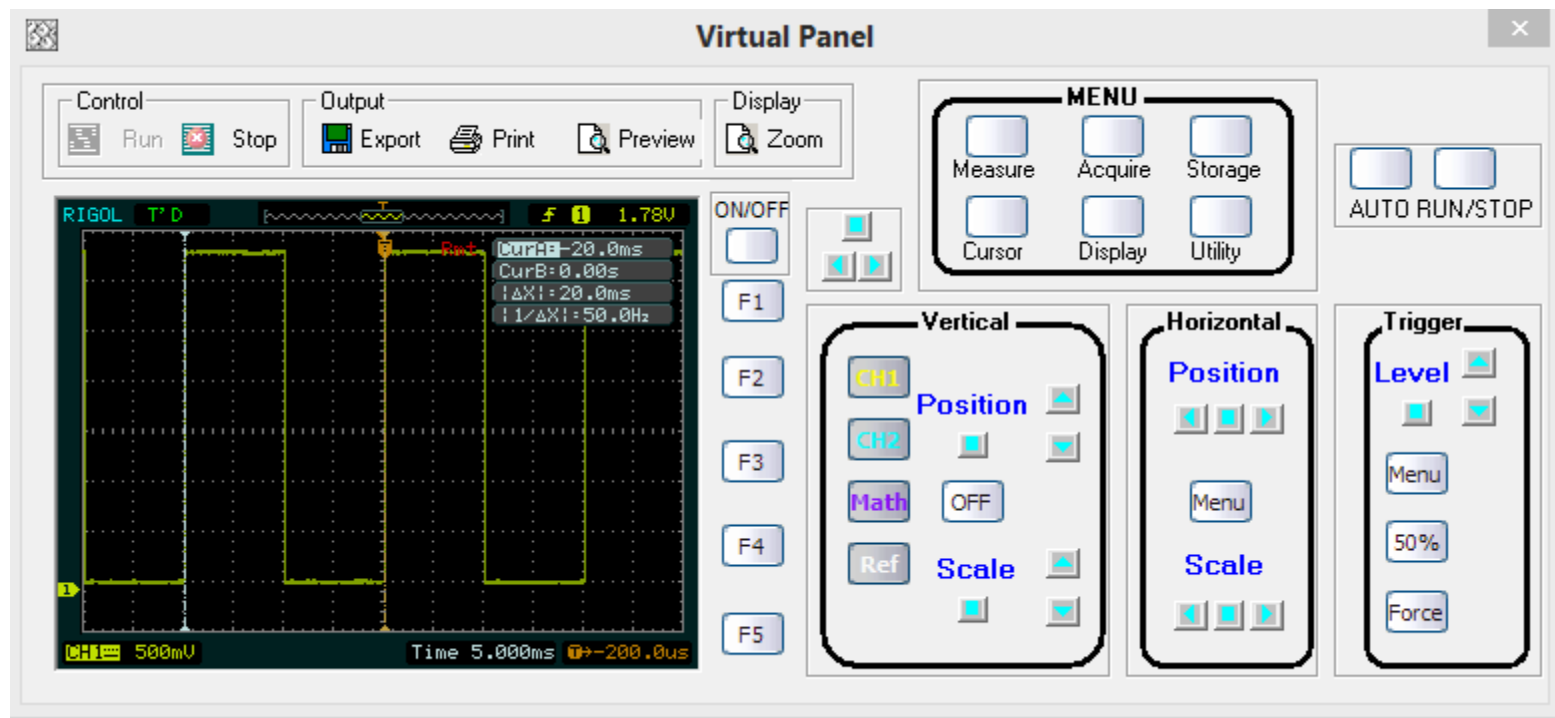
## Prožilnik

- začetek dogodka
- običajno 50%

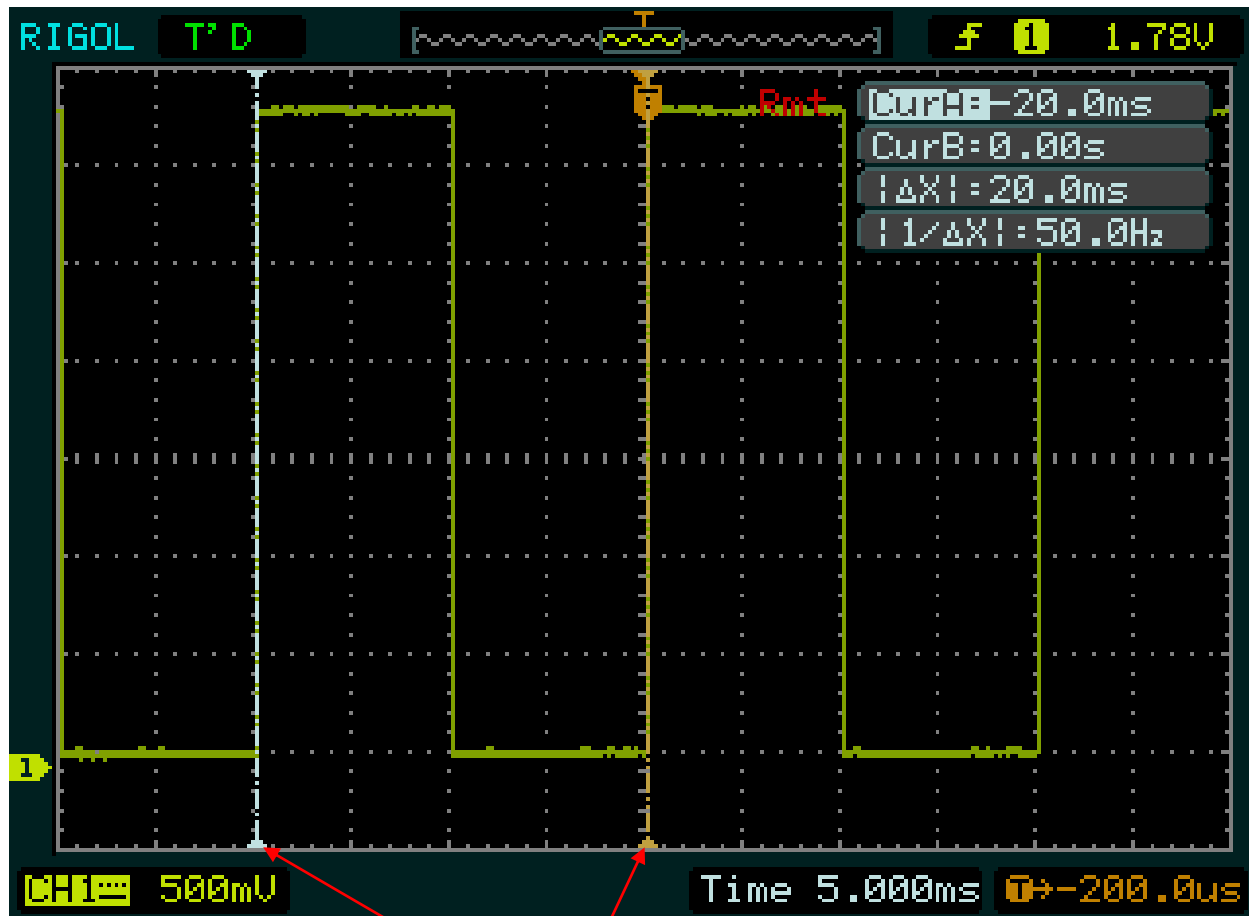


# Prednja stran osciloskopa

- PC aplikacija za osciloskop (USB povezava)



# Zaslona osciloskopa – meritev periode



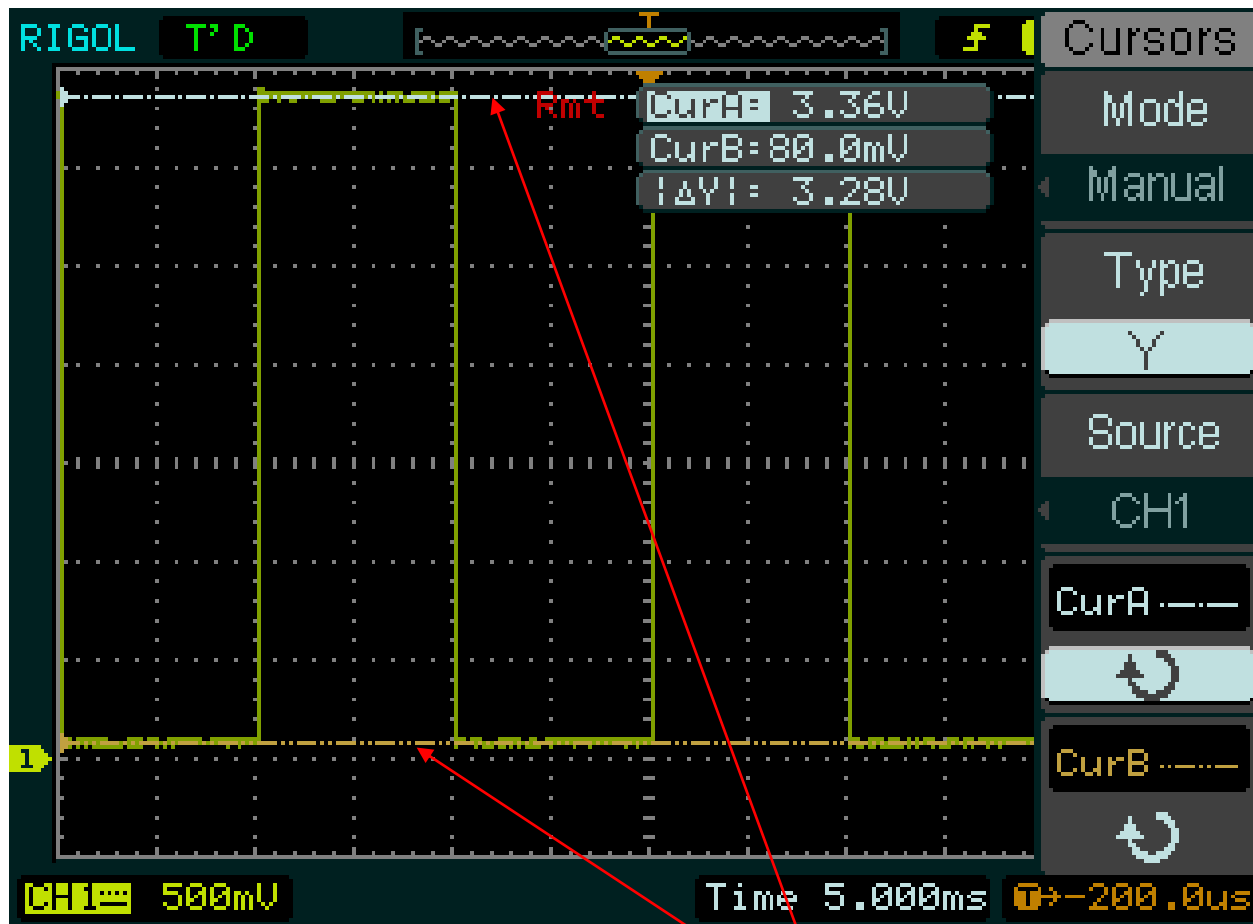
Programska nastavitve:

- Delay 10ms
- Perioda 20ms

**Meritev periode signala:**

- 20ms

# Zaslona osciloskopa – meritev amplitude



**Meritev amplitude signala:**

- 3.28V